

Facilities Inspection and Maintenance (FIM) from Enspira[®] Solutions, Inc. was developed to aid in systematically managing and tracking the facility inspection process. It offers proactive inspection programs for recording data discovered during inspections, and it offers maintenance programs for actions taken, for example, valve inspections or trimming trees around facilities. The system captures inspection data, including comments entered by the inspector, and stores the information as a historical record.

Features

The FIM application provides tools for:

- Viewing the status of existing inspection programs and areas
- Creating new or editing existing inspection programs and areas
- Capturing new inspection results
- Recalculating the percentage complete of an inspection program
- Completing inspections
- Creating cyclical inspection programs

Key Benefits

FIM shares data with the industry standard GIS platforms, allowing for the point-and-click selection of facilities for inspection. FIM also includes an easy-to-use graphical user interface for monitoring the progression of a program from start to finish. FIM is a cost-effective application for tracking individual components of single or multiple programs.

FIM is an ideal solution for performing functions such as:

- Transformer inspection
- Vegetation management
- Joint-use inspection survey
- Gas leak inspection survey
- Cathodic protection surveys
- Other configurable inspections

The application is versatile in nature and can accommodate tracking of inspection and maintenance targets ranging from buildings, park facilities, utilities assets, and beyond.

Facility Event Configuration

FIM provides the ability for you to configure and modify the type and format of the data to be recorded for each of the events. For each activity, you can configure the attribution to be recorded. At any point, if more attribution is required the event can be configured to add the new fields.

Inspection Area Management

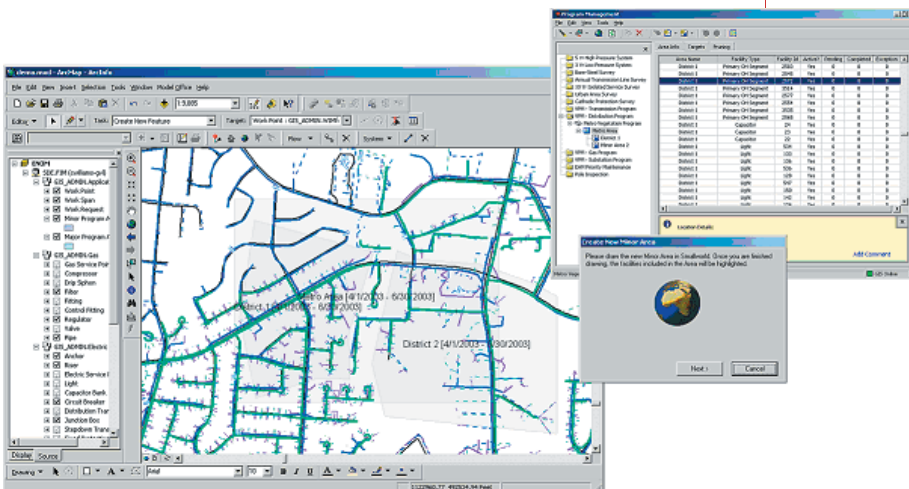
Users can select “major” or “minor” inspection areas (e.g., set of related facilities or an electrical distribution circuit). Minor inspection areas are helpful when completing an inspection in stages. To select major or minor areas, users simply click the appropriate locations or facilities within the GIS. The required information is then transferred to FIM.

Facility Location Information

FIM stores the location information of imported data and the location details of facilities selected within inspection areas. Location details may be in the form of a CIS supplied street address for a gas service point, or they may be the GPS coordinates for a pipeline or transformer in the middle of a field. FIM also provides user functions to update the location information from the source system such as a CIS or GIS system.

Facility Event History

Clicking a facility within the GIS provides access to the inspection history of the facility. The history shows the date of each inspection and includes comments the inspectors added, thus providing a detailed record for government regulators.





Real People with Inspired Solutions to Real Problems

Recalculating Inspections

If a facility has been added or removed from an area since the last inspection cycle, FIM provides functionality for a user to add or delete specific targets as well as re-generating targets based on the minor area.

Inspection Completion

Once inspection work has been performed in the field, the user can enter information to complete the inspection and generate results. Inspectors can also enter exceptions indicating the nature of a problem or why they did not complete a task, for example, "a gas leak was found" or "ice covering the pipe prevented a proper inspection."

Viewing Program Progress

The application calculates the percentage of inspection activities completed and color-codes the progression of tasks.

Auditing Program Results

FIM also provides the capability to sample a user-configurable subset of those activities to verify that they have been completed properly.

Importing Information to FIM

Following an inspection, information from a field device or another system can be imported into FIM. Users can review this information from the FIM database for a quick overview, or they can create an inspection program within Program Manager where they can then manipulate and edit the data.

Offline Operations

With no network connection, FIM has the ability to run and record event data in an Offline mode using the "Check In/Check Out" functionality. While in Offline mode, users can navigate between FIM targets and the facility using offline maps that are created during the Check Out procedure. In addition field collected data in FIM can be used to update the GIS upon check in.

Web Access

FIM can be run in the field via the internet using a standard web browser. This will provide field technicians the ability to report event data while in the field collecting the information.

PDA Version

The PDA version of FIM allows engineers to record their field data with no connection to their home office.

Once the engineer has completed their field work and entered the event data into their device, they can upload the data to the main FIM database when a network connection is available.

A Fresh Approach to a New Market

With solutions from Enspira Solutions, you're assured of everything it takes to optimize process efficiency and data flow and operate more profitably, while providing the highest level of customer satisfaction. Our fully integrated suite of solutions and services are built on the deep industry know-how and leading digital technologies you need to compete in today's market.

Enspira Solutions provides solutions for utilities, cable service providers and local governments. As an Osmose company, we have the backing of a \$600 million private company, enabling us to take a strong position in the marketplace and offer premier business transformation solutions.

Contact Enspira Solutions for more information or to arrange a demonstration today!
Mehrmod Mohseni, VP
mmohseni@enspiria.com
303.521.5395
www.enspiria.com

