

Utilities use their IT systems to respond to ever changing market conditions brought on by weather, fuel prices, consumer demands and regulations. They need a system that uses the best business intelligence tools to assist the integration of key performance indicators for operations, maintenance, engineering and financials.

ESIntial enables utilities to manage their facilities; such as supporting outage management, field force automation, engineering design, asset management and network analysis and to manage Smart Grid implementations; such as field acceptance testing, deployment tracking, and network optimization and failover testing.

Spatially Enabled Outage Communication Dashboards

ESIntial provides dashboard views of storm data, helping utilities to increase internal and customer communications around outage status and restoration activities. By taking a spatial view of the data coming from the Outage Management System, current counts, metrics and status indicators can be viewed at service territory, operating headquarter and zip code levels, giving an up to date picture of restoration efforts.

- Is the situation worsening or improving?
- Do I have my crews targeting the correct areas?
- Are all of my wire-down events covered?
- Do my restoration times need updating?

And when the event is over, utilizing the temporal component of the data to replay the decisions allows for the review and improvement of key decisions and processes.

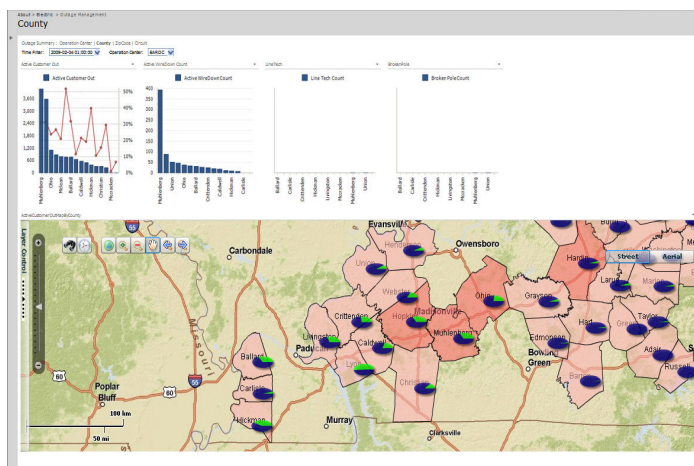


Image 1. ESIntial for outage communications.

ESIntial. Enspira Solutions' spatially enabled business intelligence and reporting platform, providing a new view of your business utilizing standard applications that - together - create a spatially intelligent portal into your organization.

ESIntial Asset Management Portal

Many times key decision making data will be spread across an organization, collected in a number of formats, and at different intervals, or even from external sources. ESIntial provides a non-proprietary environment to aggregate large amounts of data from various systems, often times from different departments, for an 'overall' view of your business.

ESIntial can help you answer key business questions:

- Is my investment in vegetation management paying off with a reduction in tree related outages?
- Do I really need to upgrade my feeder, or will a targeted Demand Response Marketing campaign reduce enough load to defer investment for another year?
- Which operating headquarters are fastest in turning as-built drawing into Outage Management System updates when we build out the network, and where are they more efficient?

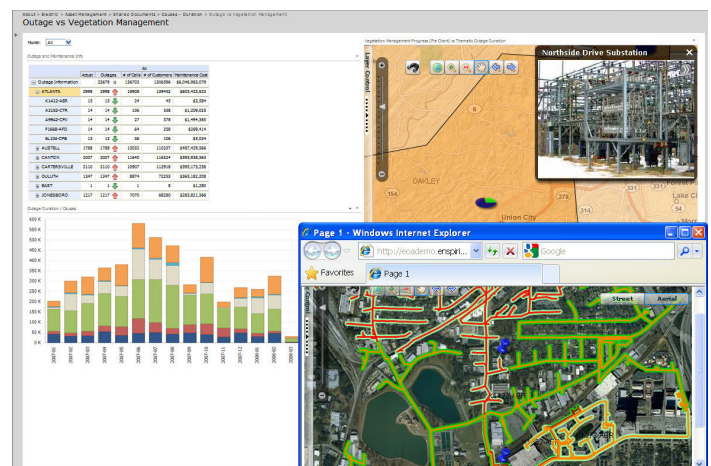


Image 2. ESIntial for asset management.

ESIntial for Smart Meter Deployment

Smart Grid implementations require a whole new set of metrics. The youth of smart metering and meter data management system (MDMS) technologies are a risk for utilities, along with the sheer scale of deployment. These systems are central to the revenue stream of a utility. Project planning, management, validation and verification processes must be exemplary in order to reduce utility risk. ESIntial provides preconfigured solutions that help in addressing these, from the initial ramp up of the project right the way through to the installation, turn-on and verification of the final meter.

Field Acceptance Testing

Most smart metering projects include a field acceptance test (FAT) prior to full scale deployment. The primary goals of the FAT are to 1) verify one or more vendors' Smart Meter systems ability to achieve the benefits identified by the business case and 2) meet the functional and performance requirements agreed to in the vendor statement of work (SOW). The secondary goal of the FAT is to provide the utility with hands-on experience of a smart meter system. The successful execution of a field test is typically a contract gate for proceeding with mass deployment.

For Enspira's ESIntial tool provides the utility with a source of key measures of technical performance data regarding the selected smart meter technology. It also tests the availability and accessibility of the necessary data within the smart meter technology head-end(s) and validates that the interfacing mechanisms are usable within the utility's environment and the data is accurate based upon the evaluation criteria.

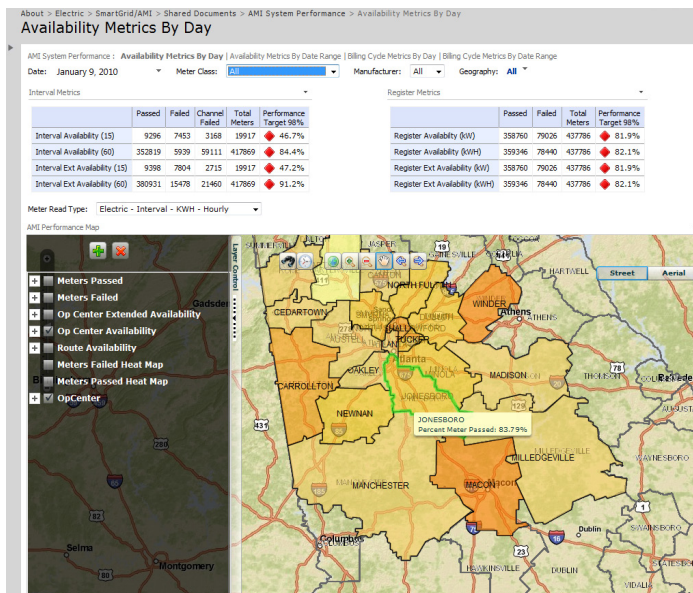


Image 3. ESIntial for field acceptance testing.

Deployment Tracking

By any standards, rolling out a Smart Meter to every customer is a large and complex affair for any utility. Maintaining an effective view of progress against plan can prove difficult and time consuming over the course of a project, and communicating that progress to the necessary stakeholders has challenges of its own. Enspira's ESIntial tool provides visualization of project progress on a count and percentage basis, providing the necessary visibility and insight to fix issues quickly before they impact overall project success.

Network Optimization and Failover Testing

It is imperative for the utility to ensure that their smart meter network will continue to operate effectively both during and after deployment. Two critical areas for a utility to focus on include:

- Ensuring the self-healing network capabilities to allow network failover should an AMI network device (access point, repeater) become inoperable are working correctly is a critical part of the network testing process.
- Ensuring the proper RF communications, system failover and system performance will maintain operational and contractual performance requirements after the as-built AMI network and smart meters are fully deployed.

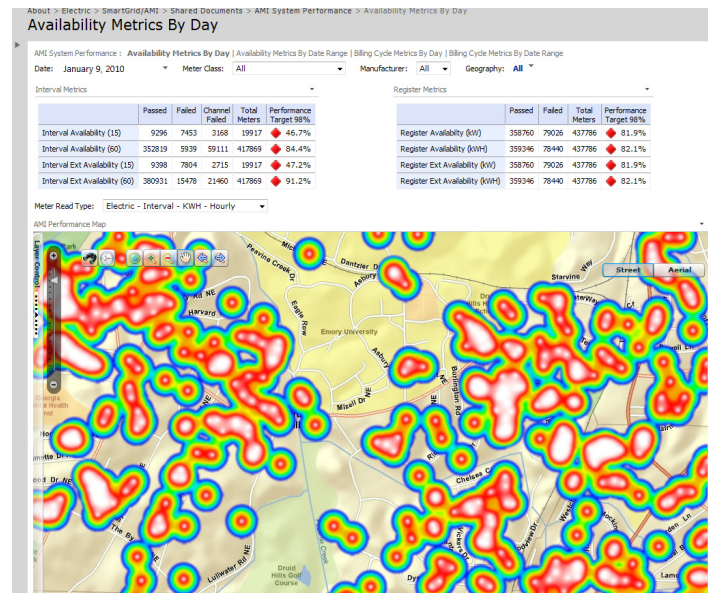


Image 4. ESIntial for network optimization and failover testing.

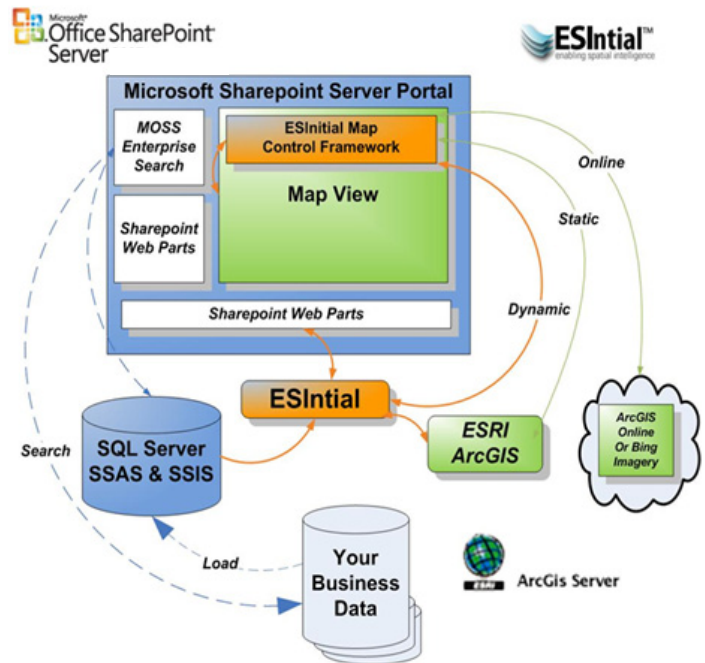
Introducing ESIntial - Enabling Spatial Intelligence

ESIntial Key Components

The ESRI ArcGIS software suite enables utilities to manage their facilities and support field force automation, engineering design, asset management, network analysis and other critical tasks.

Microsoft's PerformancePoint server, in conjunction with SharePoint server and SQL Server Analysis Server provides powerful analytical capability and enterprise access to key performance metrics and reports.

Enspira ESIntial components bring together these enterprise class applications in a single environment with Microsoft SharePoint, providing an even more powerful tool for utilities.



Overview of the ESIntial architecture

Deploy ESIntial Today

ESIntial is a web-based single portal solution that integrates ESRI's ArcGIS Server solution integrated with Microsoft SharePoint Server and SQL Server.

ESIntial is a spatially enabled solution that easily integrates existing flat data with the GIS providing a unique view of operational systems.

ESIntial is a scalable solution that supports performance and decision-making processes of both large and small utilities.

ESIntial ties data together from disparate data sources without tying systems together.

ESIntial provides a portal that allows the user to quickly move between high level views to detailed analyses with just a few clicks, accessing information such as KPIs and scorecards tied to key business-critical measures.

Introducing ESIntial

Enspira Solutions, a Fresh Approach to a New Market

With energy delivery solutions from Enspira Solutions, you have everything it takes to optimize process efficiency and data flow and operate more profitably while providing the highest level of customer satisfaction. Our fully integrated suite of solutions and services are built on deep industry know-how and leading digital technologies necessary to compete in today's market.

Enspira Solutions provides technical and business process consulting and system integration to dramatically change and improve the way our clients interact with their customers, partners and suppliers. With a wealth of industry experience and extensive business consulting and IT services, we combine proven technology components to deliver working business solutions to our clients. Our partnership approach reduces your risk by delivering proven solutions in less time.

About Enspira

Enspira® Solutions (Enspira) is a leading provider of Smart Grid consulting and program integration services. With a unique combination of experience, strategy and implementation expertise, Enspira's experts provide in depth Smart Grid technology expertise and services by defining and delivering complete solutions that benchmark the intelligent utilities and cable and telecommunication companies of tomorrow. Specific areas of expertise include: Smart Meter & Meter Data Management Systems, Demand Response, Transmission and Distribution Management Systems, Consumer Portal and Energy Management Systems, Outage Management Systems, Geographical Information Systems, Work and Asset Management, regulatory submission assistance, and expert witness testimony. For more go to: enspiria.com

Enspira Solutions has joined forces with Black & Veatch to provide clients with complete concept through completion expertise in Smart Grid solutions.

Together, we offer a single point of contact for planning, developing and implementing this complex infrastructure. For more go to: bv.com/Services/Smart_Utility/



A BLACK & VEATCH COMPANY

Deploy ESIntial Today!

Contact Enspira Solutions for more information and to arrange a demonstration.

Mehrdod Mohseni, SVP & General Manager
mmohseni@enspiria.com